


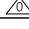


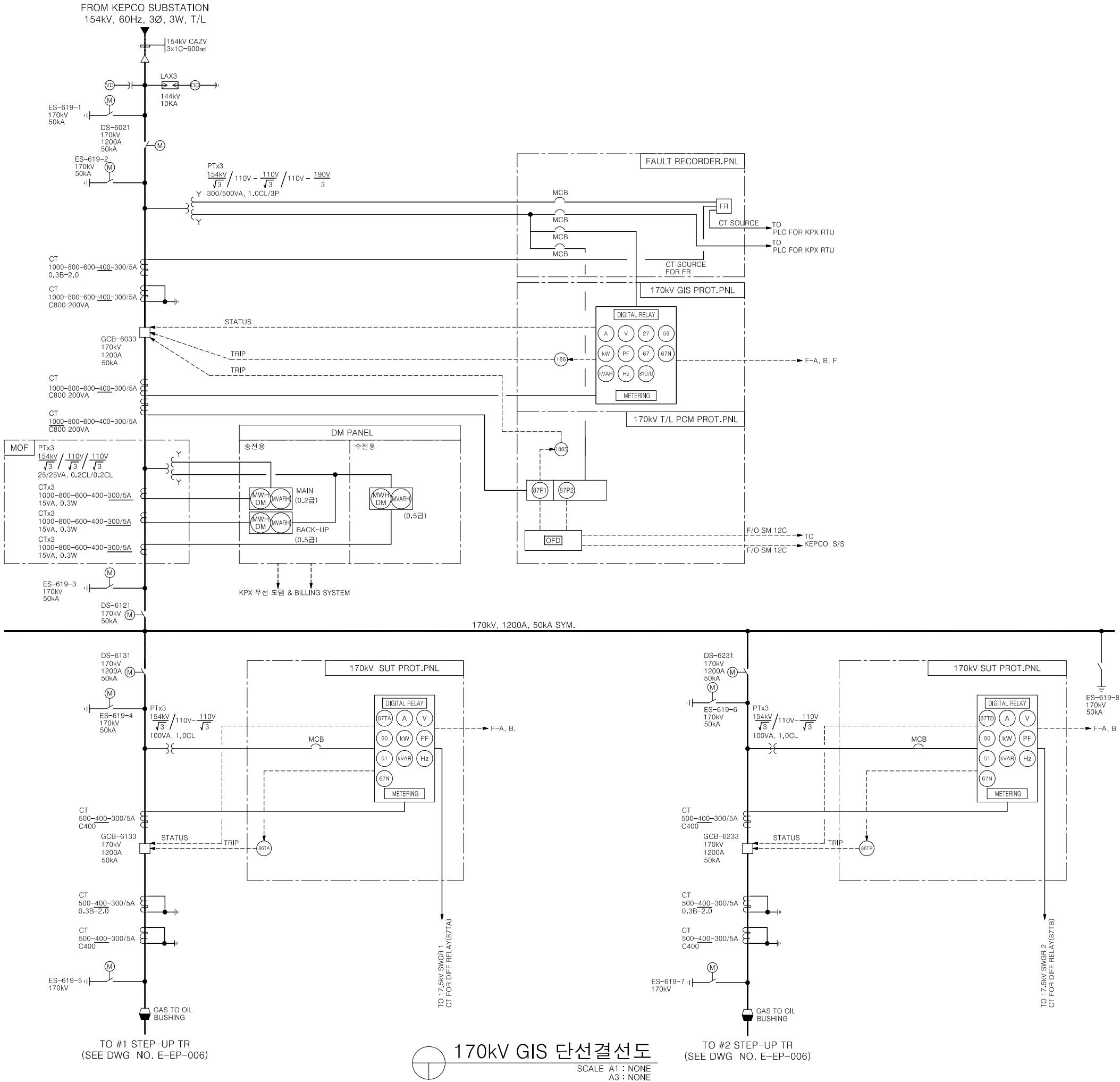


KEY 단선결선도  
SCALE A1 : NONE  
A3 : NONE

						
						
						
						
	'13.12.20.	AS BUILT	S.I.LEE	J.I.PARK	S.W.JIN	C.R.KAN
REV.NO.	DATE	DESCRIPTION	PRPD	CHKD	REVD	APPD
PROJECT 경기그린에너지(58.8MW) 건설사업						
CLIENT 경기그린에너지주식회사						
DESIGN  						
TITLE KEY 단선결선도						
SCALE		DWG. NO.				REV. NO
A1 : NONE A3 : NONE		E - EP - 004				0



RELAY FUNCTION TABLE

RELAY NO.	DESCRIPTION
21	DISTANCE RELAY
27	UNDER VOLTAGE RELAY
50	INSTANTANEOUS OVERCURRENT RELAY
51	TIME OVERCURRENT RELAY
67N	DIRECTIONAL OVERCURRENT RELAY (NEUTRAL GROUND)
59	OVERVOLTAGE RELAY
87P	PCM CURRENT DIFFERENTIAL RELAY

FUNCTION TABLE

CODE	DESCRIPTION
F-A	INPUT TO PLC(ESS), HARDWIRE
F-B	INPUT TO PLC(ESS), COMMUNICATION CABLE
F-F	INPUT TO FAULT RECORDER
OFD	OPTICAL FIBER DISTRIBUTION

NOTES

- FOR SYMBOLS, LEGEND AND GENERAL NOTES  
SEE DWG NO. E - EP - 001,002
- RATING OF EQUIPMENT ON THIS DRAWING IS SUBJECTED  
TO CHANGE AS PER DESIGN PROGRESS.
- M.O.F SHALL INCLUDE THE ADEQUATE VOLTAGE TRANSFORMERS  
AND CURRENT TRANSFORMERS FOR KEPCO'S AND KPX REQUIREMENT  
OF BILLING SYSTEM
- 170kV GIS RCP 및 170kV OLTC RCP 단선도는 제작사의 제작도면을 참조 할 것.

△						
△						
△						
△						
△	'13.12.20.	AS BUILT	S.I.LEE	J.I.PARK	S.W.JIN	C.R.KANG
REV.NO.	DATE	DESCRIPTION	PRPD	CHKO	REVD	APPD
PROJECT 경기그린에너지(58.8MW) 건설사업						
CLIENT 경기그린에너지주식회사						
DESIGN posco 포스코ICT 삼천리ES						
TITLE 170kV GIS 단선결선도						
SCALE	DWG. NO.					REV. NO
A1 : NONE A3 : NONE	E - EP - 005					0